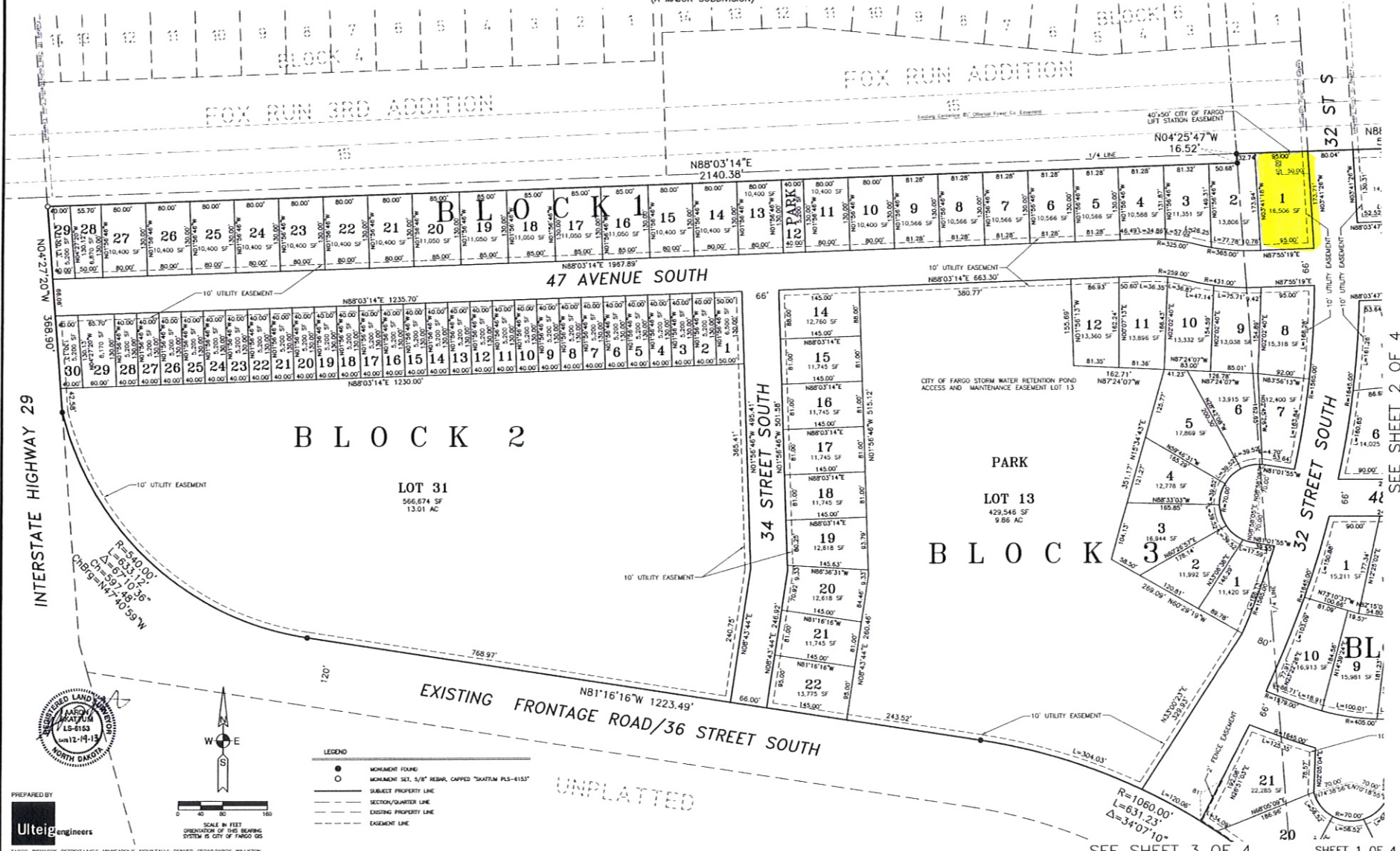


TIMBER CREEK FIRST ADDITION

TO THE CITY OF FARGO, CASS COUNTY, NORTH DAKOTA
 AN UNPLATTED PORTION OF THE SOUTH HALF, SECTION 35, TOWNSHIP 139 NORTH, RANGE 49 WEST
 AND A REPLAT OF A PORTION OF LOT 50, BLOCK 1 OF MEADOW CREEK ADDITION
 (A MAJOR SUBDIVISION)

1412950
 City of Fargo Book: 2-1 Page: 65



INTERSTATE HIGHWAY 29



- LEGEND
- MONUMENT FOUND
 - MONUMENT SET, 5/8" REBAR, CAPPED "SKATUM PLS-6153"
 - SUBJECT PROPERTY LINE
 - - - SECTION/QUARTER LINE
 - - - EXISTING QUARTER LINE
 - - - EASEMENT LINE

PREPARED BY
Ulteigengineers

FARGO, BISMARCK, DETROIT LAKE, MINNEAPOLIS, SIOUX FALLS, DENVER, CEDAR RAPIDS, ILLINOIS

SEE SHEET 3 OF 4

SHEET 1 OF 4

SEE SHEET 2 OF 4