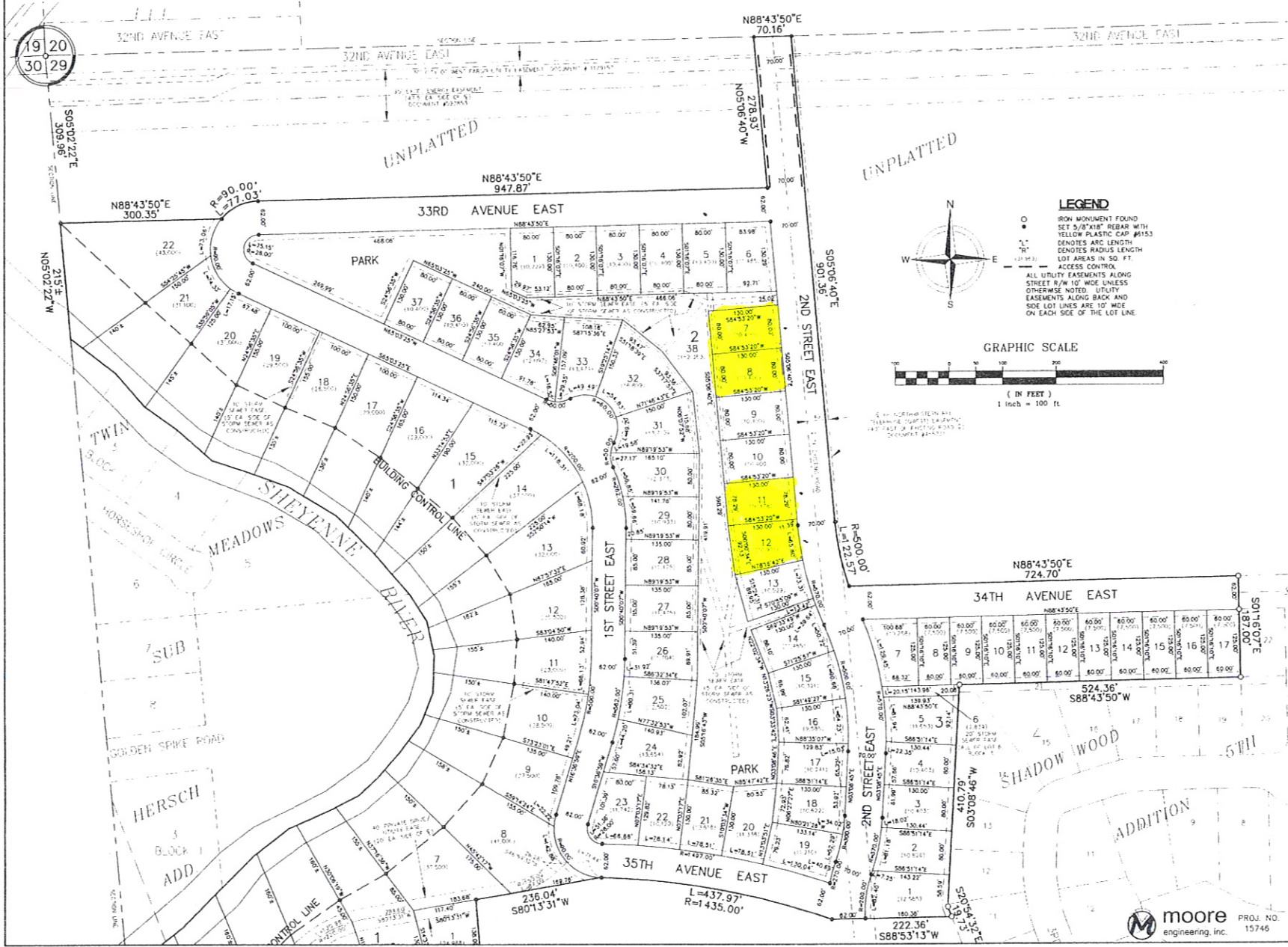


PLAT OF **SHADOW CREEK FIRST ADDITION** TO THE CITY OF WEST FARGO, A  
 PLAT OF PART OF THE NORTHWEST 1/4 OF SECTION 29, TOWNSHIP 139 NORTH, RANGE 49 WEST,  
 CASS COUNTY, NORTH DAKOTA.



**LEGEND**

- IRON MONUMENT FOUND SET 5/8"x18" REBAR WITH YELLOW PLASTIC CAP #6153
- DENOTES ARC LENGTH
- DENOTES RADIUS LENGTH
- LOT AREAS IN SQ. FT.
- ACCESS CONTROL
- ALL UTILITY EASEMENTS ALONG STREET R/W 10' WIDE UNLESS OTHERWISE NOTED. UTILITY EASEMENTS ALONG BACK AND SIDE LOT LINES ARE 10' WIDE ON EACH SIDE OF THE LOT LINE.

**GRAPHIC SCALE**

( IN FEET )  
 1 inch = 100 ft

5" = NORTH STEEP HILL  
 1" = 100' HORIZONTAL DISTANCE  
 1" = 100' HORIZONTAL DISTANCE  
 1" = 100' HORIZONTAL DISTANCE

1332961  
 PAGE 1 OF 3  
 11/15/2011 11:51 AM



SHEET 1 OF 3

DOCUMENT NO. 1332961  
 STATE OF NORTH DAKOTA  
 COUNTY OF CASS

I HEREBY CERTIFY THAT THE ABOVE INSTRUMENT WAS FILED IN THIS OFFICE FOR RECORD ON THIS 31<sup>st</sup> DAY OF Sept. A.D. 2011 AT 3:11 O'CLOCK P.M. AND WAS RECORDED IN BOOK 11 OF Plats PAGE 11

*Janet A. Spivey* COUNTY RECORDER  
 BY \_\_\_\_\_ DEPUTY

Y-1-22

**moore** engineering, inc.  
 PROJ. NO. 15746